

# TOP 10 REASONS

*to Rely on Welch and Rushe*

1

## CUSTOMER COMMITMENT

Your experience and satisfaction matters. Our dedicated service team aims to build and retain lasting relationships that go beyond transactional interactions.



2

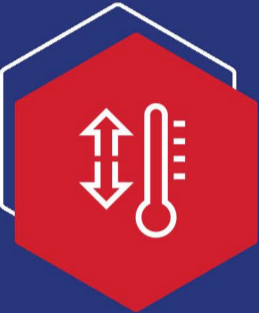
## CUSTOMIZED SERVICE CONTRACTS

Our service contracts are customized to your needs, schedule, and budget.

3

## EMERGENCY SERVICE

In an emergency, quick access to reliable service is important. We are committed to responding to you within two hours - day or night.



4

## REFRIGERATION TECHNICIANS

Our technicians are trained to service all climate controlled commercial refrigeration systems including freezer and ice machines.

5

## RANGE OF B2B SERVICES

Our services include HVAC and plumbing systems for power plants, commercial office spaces, civic, educational, healthcare, labs, and government buildings.



6

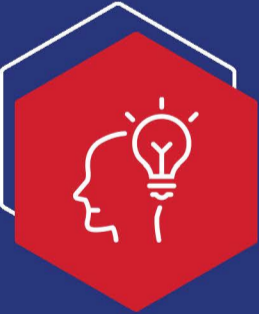
## PROFESSIONAL TECHNICIANS

Welch and Rushe employs technicians who are certified and licensed and on average have 10-15 years of industry experience.

7

## HVAC & PLUMBING SPECIALTIES

From HVAC chillers, cooling towers, and boilers to plumbing sewage lines, pits, pumps, underground leaks, circulation pumps, water treatment, booster stations, hot water heaters, rainwater drains and lines.



8

## SKILLED PROBLEM SOLVERS

From our sales representatives to our efficient technicians, we know how to troubleshoot and bring innovative solutions to any repair, retrofit, or new installation.

9

## IN-HOUSE SUPPORT

We are a fully functioning mechanical contractor. Our technicians have standard tools and equipment in their service vehicles for greater efficiency. If ever your service requires fabrication, our in-house prefab shop will assist in meeting your customer needs.



10

## EASE OF DOING BUSINESS

e-Contracts, electronic billing, and access to digitized inspection reports with photo documentation for your records.

